

Handwritten musical notation on a 12-staff system. The system includes a treble clef, a common time signature (C), and a key signature of one sharp (F#). The notation is written in black ink and includes various note values, rests, and accidentals. A large bracket is drawn above the first staff, spanning the first two measures.

Handwritten musical notation on a 12-staff system. The system includes a treble clef, a common time signature (C), and a key signature of one sharp (F#). The notation is written in black ink and includes various note values, rests, and accidentals.

Handwritten musical notation on a 12-staff system. The system includes a treble clef, a common time signature (C), and a key signature of one sharp (F#). The notation is written in black ink and includes various note values, rests, and accidentals. Blue ink annotations are present, including a large blue 'X' in the second staff and several blue '6' characters in the third staff.

Handwritten musical notation on a 12-staff system. The system includes a treble clef, a common time signature (C), and a key signature of one sharp (F#). The notation is written in black ink and includes various note values, rests, and accidentals.



213

0 1

not

100



Handwritten musical notation on a three-staff system. The top staff is in treble clef, the middle in alto clef, and the bottom in bass clef. The music consists of quarter and eighth notes with various accidentals (sharps, naturals, flats) and some blue ink corrections.

Handwritten musical notation on a three-staff system. The top staff is in treble clef, the middle in alto clef, and the bottom in bass clef. This system features significant blue ink corrections, including a large bracketed section in the middle staff and various note changes.

Handwritten musical notation on a three-staff system. The top staff is in treble clef, the middle in alto clef, and the bottom in bass clef. This system includes blue ink corrections, notably a bracketed section in the top staff and a large greyed-out area in the middle staff.

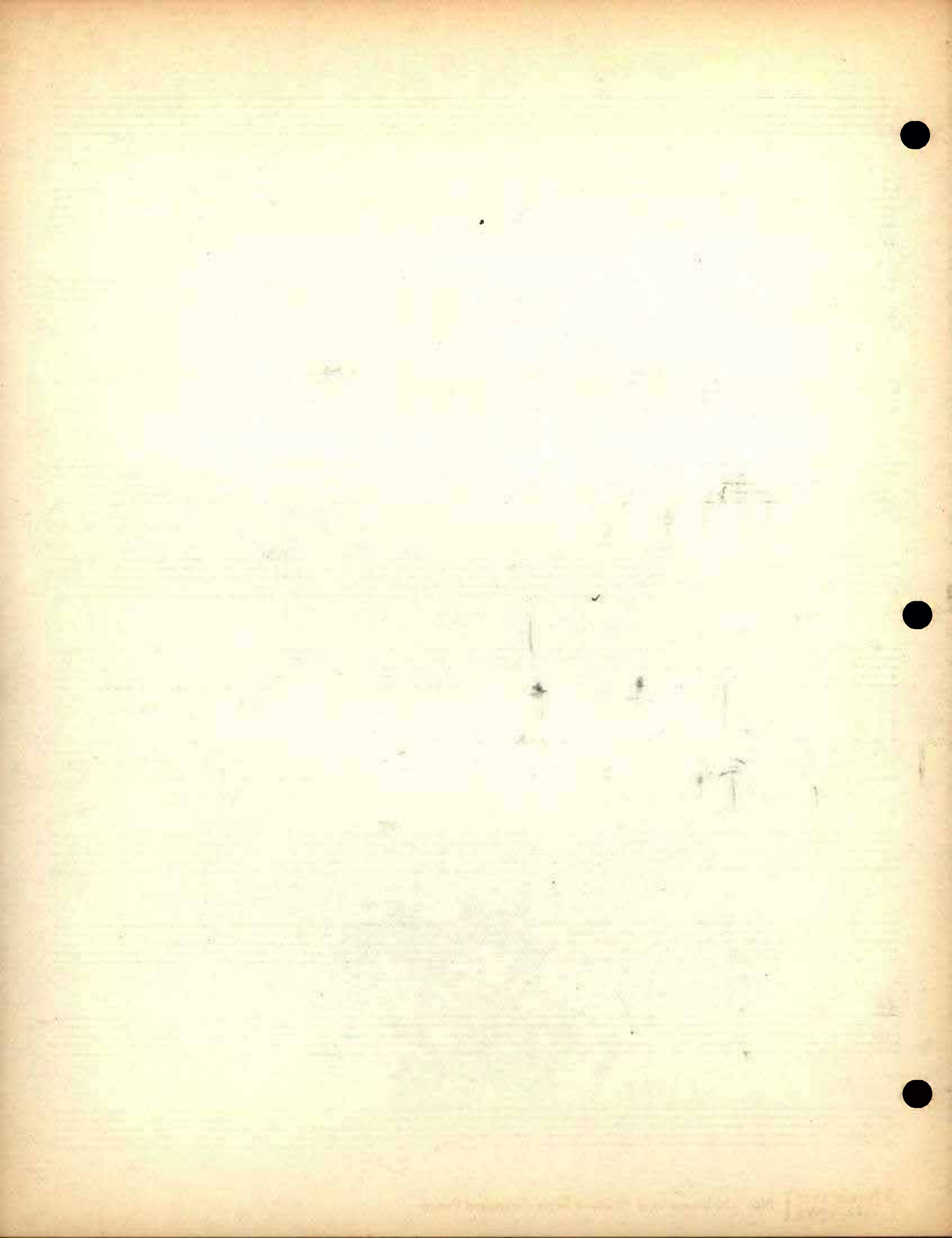
Handwritten musical notation on a three-staff system. The top staff is in treble clef, the middle in alto clef, and the bottom in bass clef. The notation includes various note values and accidentals, with some blue ink corrections.



















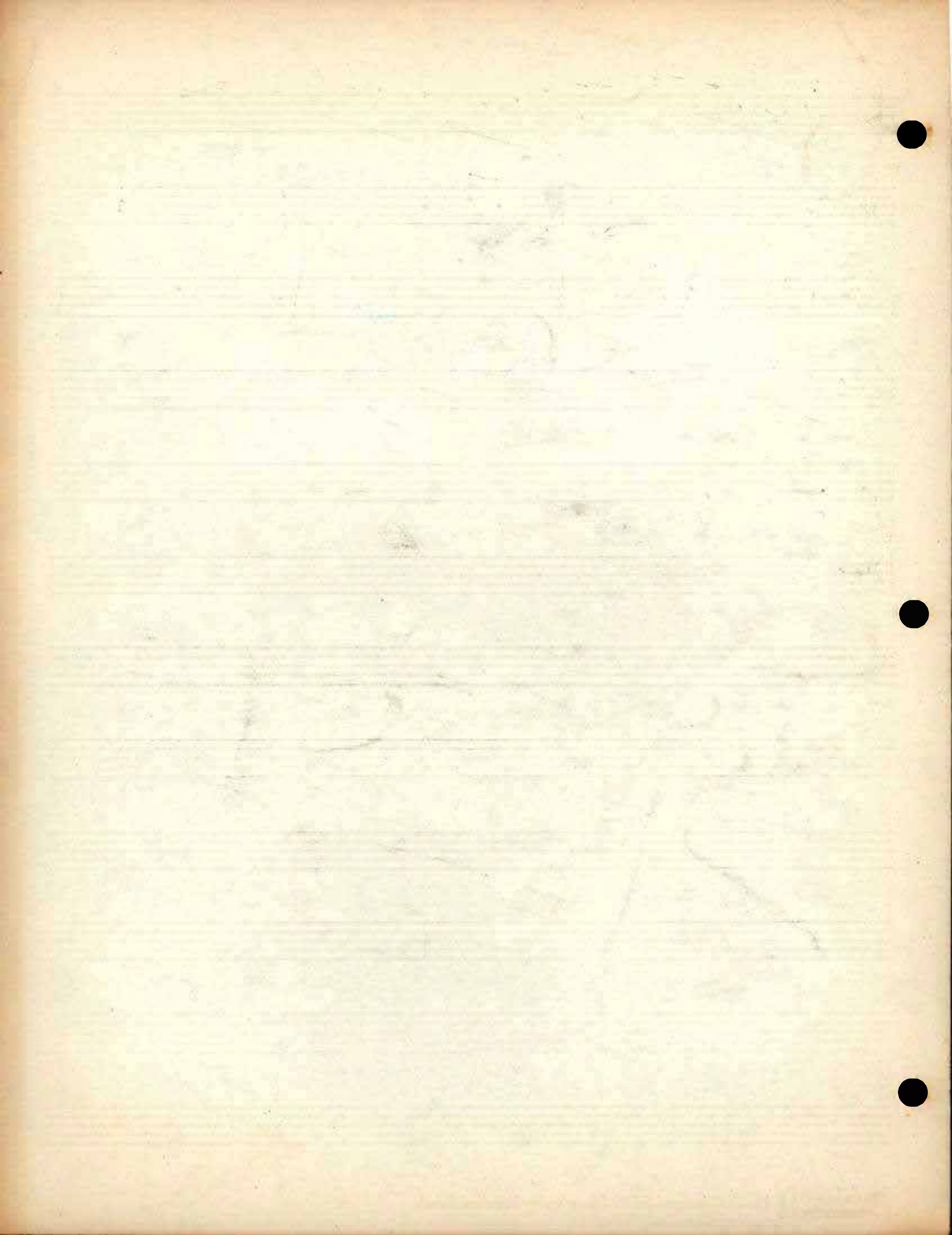


Handwritten musical notation on three staves. The top staff contains a melodic line with various notes and rests, including some with accidentals. The middle and bottom staves appear to be accompaniment, with notes and rests. The notation is somewhat sketchy and includes some vertical lines that might be bar lines or stems.

Handwritten musical notation on three staves. The top staff has a few notes and rests. The middle and bottom staves have some notes and rests, but the notation is less developed than the first system. There are some vertical lines and stems visible.

A series of ten empty musical staves, arranged in two groups of five. Each staff consists of five horizontal lines.







Handwritten musical notation on a single staff system. The notation includes treble and bass clefs, a key signature of one sharp (F#), and a time signature of 6/8. The music features a complex melodic line with many accidentals and a bass line with some blue ink markings.

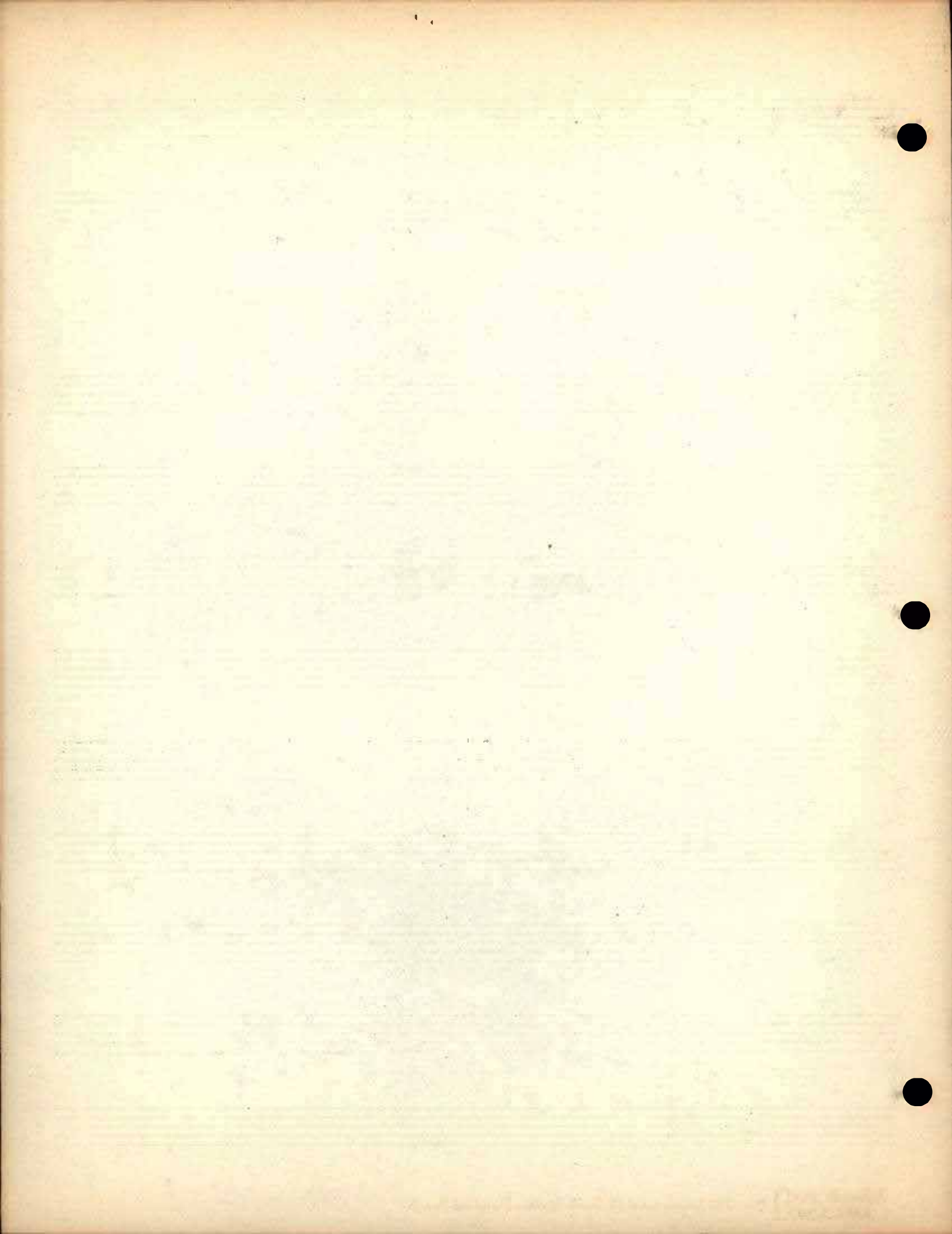
Handwritten musical notation on a single staff system. The notation includes treble and bass clefs, a key signature of one sharp (F#), and a time signature of 6/8. The music features a complex melodic line with many accidentals and a bass line with some blue ink markings.

Handwritten musical notation on a single staff system. The notation includes treble and bass clefs, a key signature of one sharp (F#), and a time signature of 6/8. The music features a complex melodic line with many accidentals and a bass line with some blue ink markings.

Handwritten musical notation on a single staff system. The notation includes treble and bass clefs, a key signature of one sharp (F#), and a time signature of 2/4. The music features a complex melodic line with many accidentals and a bass line with some blue ink markings.

Handwritten musical notation on a single staff system. The notation includes treble and bass clefs, a key signature of one sharp (F#), and a time signature of 2/4. The music features a complex melodic line with many accidentals and a bass line with some blue ink markings.







Hand page 28

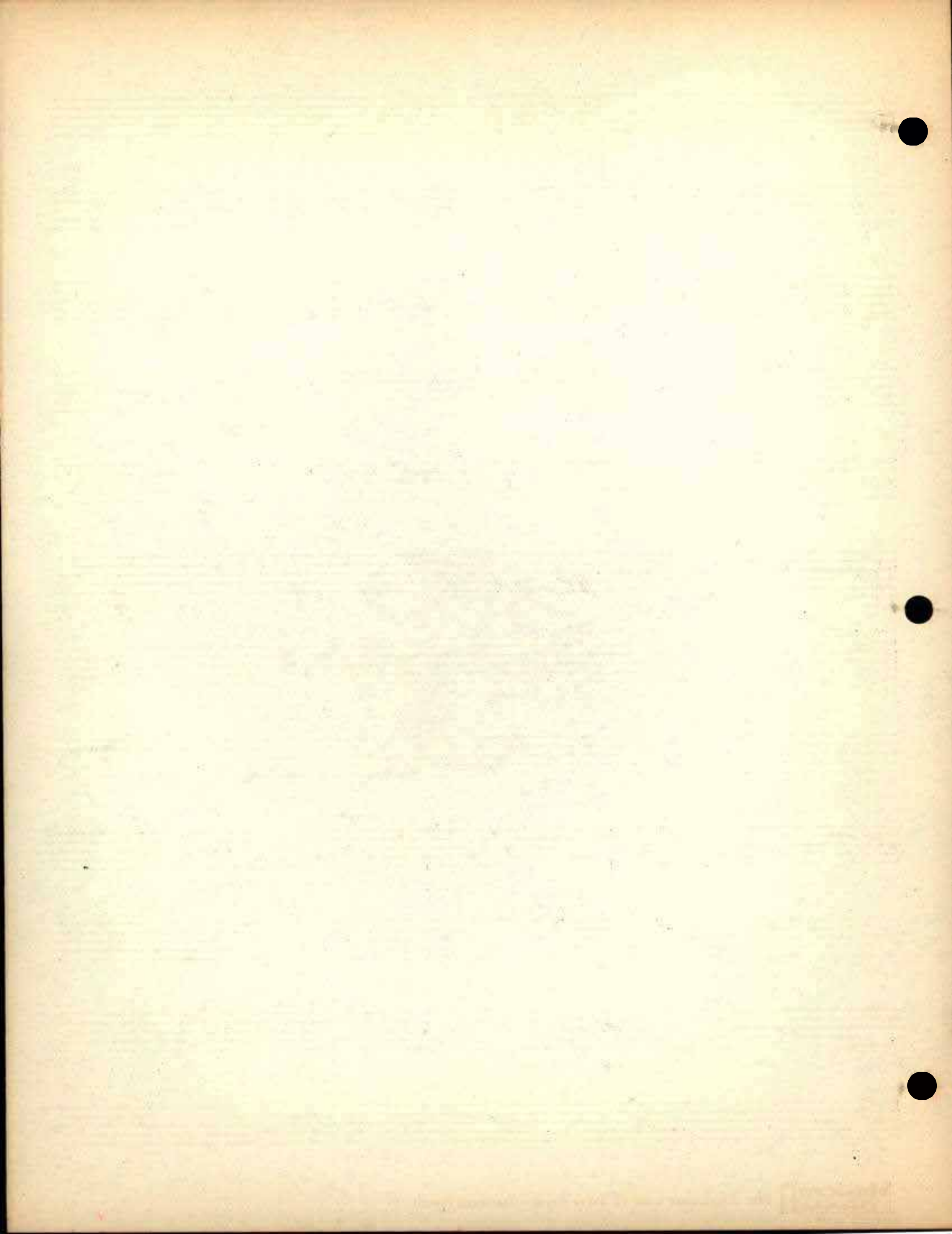
Handwritten musical notation for page 28. The first system consists of two staves with notes and chords. The second system also consists of two staves with notes and chords. The notation includes various note values and chord symbols.

Page 39

Handwritten musical notation for page 39. The first system consists of two staves with notes and chords, including blue annotations. The second system also consists of two staves with notes and chords, including blue annotations. The notation includes various note values and chord symbols.

Handwritten musical notation for page 39, featuring two staves with notes and chords. The notation includes various note values and chord symbols.





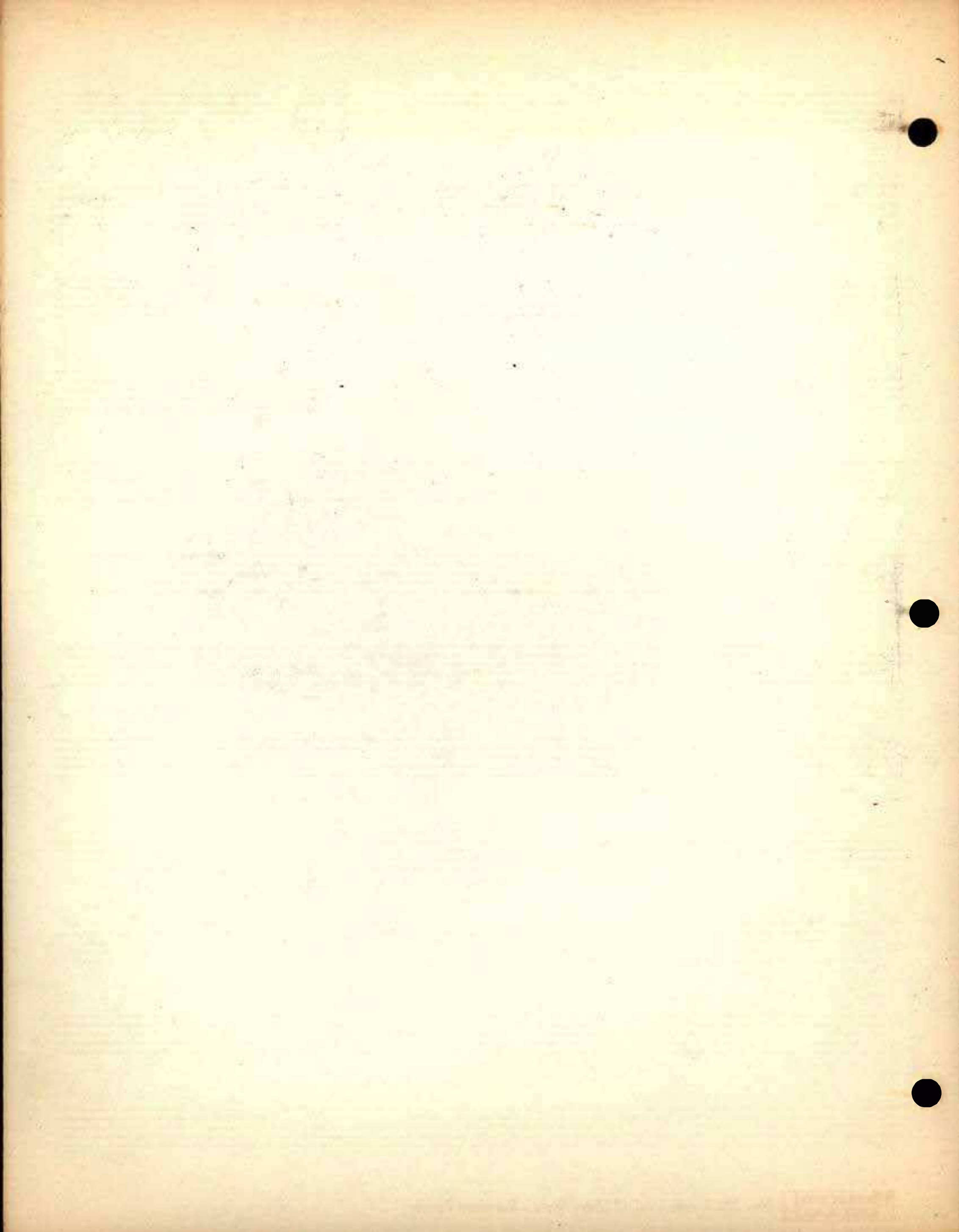


Handwritten musical notation on a 12-staff system. The top staff contains a melodic line with various notes and rests. The second staff has a few notes at the end. The third and fourth staves are mostly empty with some horizontal lines. The fifth and sixth staves are also mostly empty. There are some handwritten 'x' marks above the top staff.

Handwritten musical notation on a 12-staff system. The top staff contains a melodic line with various notes and rests. The second staff has a few notes. The third and fourth staves are mostly empty with some horizontal lines. The fifth and sixth staves are also mostly empty.

Handwritten musical notation on a 12-staff system. The top staff contains a melodic line with various notes and rests. The second staff has a few notes. The third and fourth staves are mostly empty with some horizontal lines. The fifth and sixth staves are also mostly empty.







Handwritten musical notation on a four-staff system. The notation includes treble and bass clefs, a key signature of one flat (B-flat), and a common time signature (C). The music consists of several measures with various note values, rests, and accidentals. Some notes are highlighted in blue ink.

Handwritten musical notation on a four-staff system, continuing the piece. It features treble and bass clefs, a key signature of one flat, and a common time signature. The notation includes various note values, rests, and accidentals, with some notes highlighted in blue ink.

Four empty musical staves, each consisting of five horizontal lines, arranged vertically.



