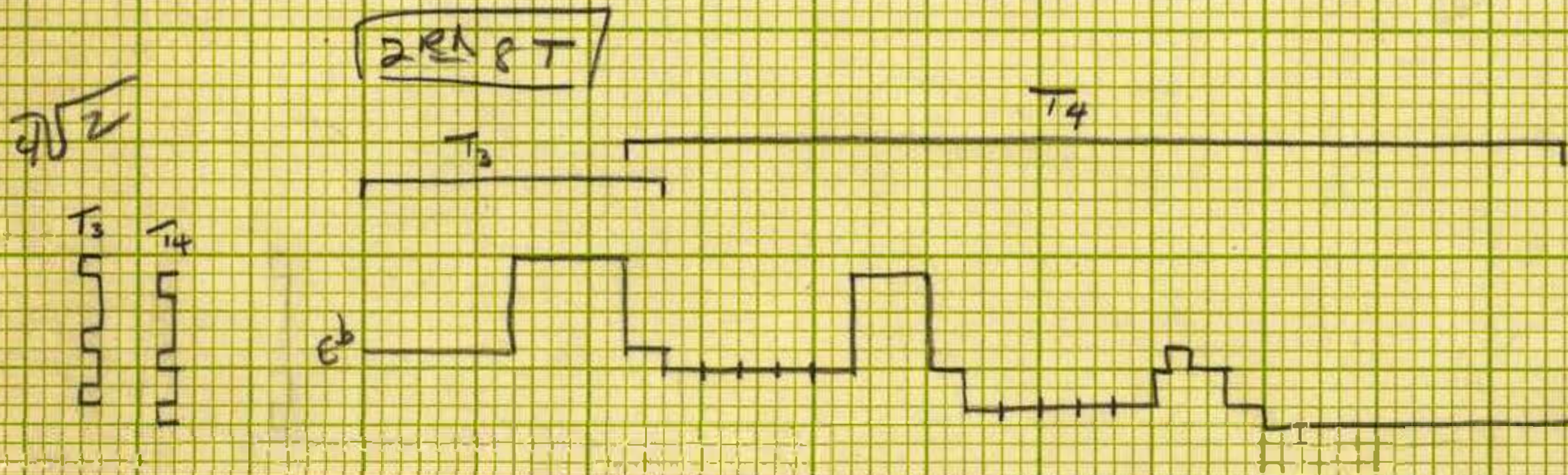
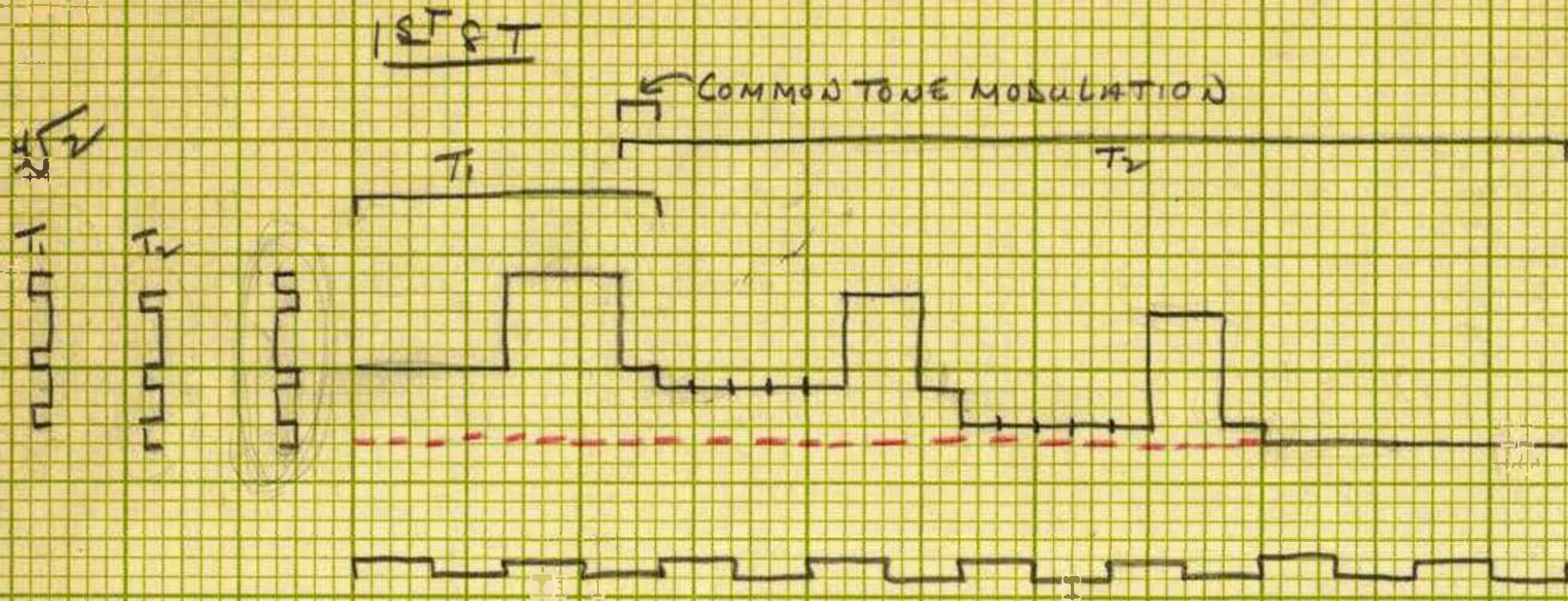
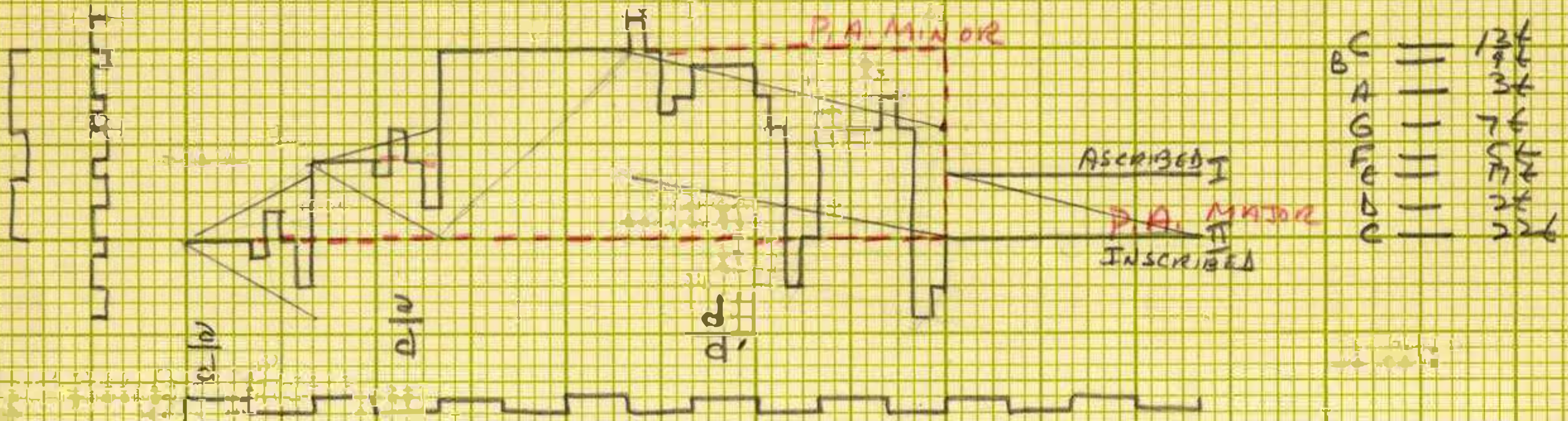


ALL THE THINGS YOU ARE



SMOKE GETS IN YOUR EYES



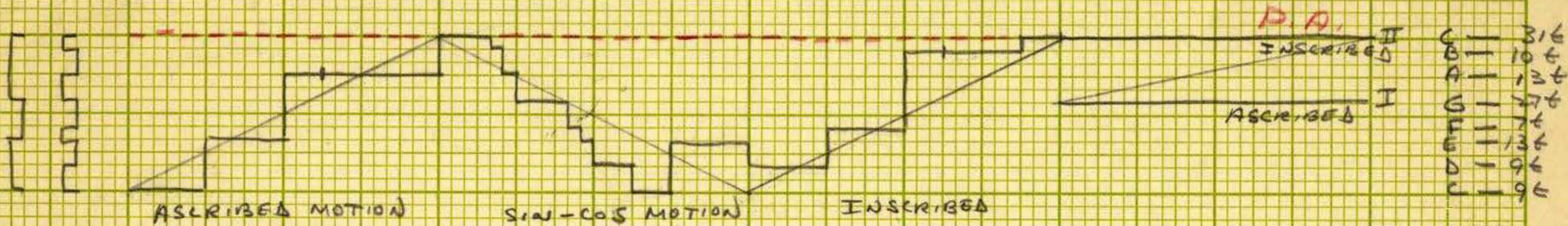
$$\frac{d}{d'} 2T + \frac{a}{a'} 2T + b 4T$$

$$5a + 5a' + 12 + 15a + 1a$$

IF I LOVED YOU

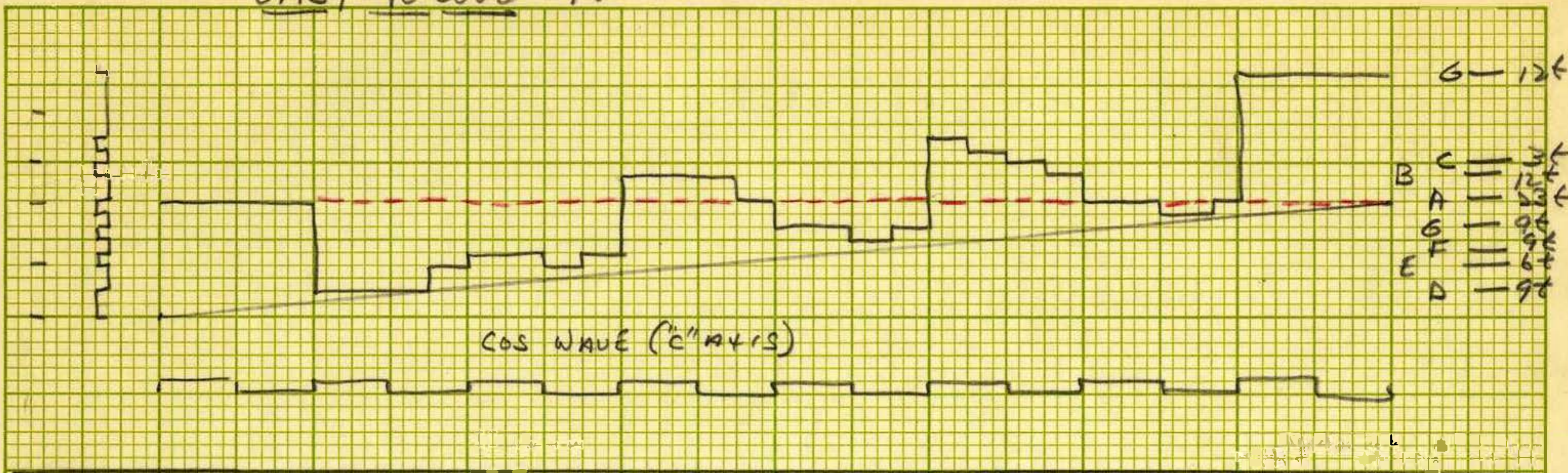
1 1/2

NOTE: THIS MELODY IS TYPICAL OF FRUSTRATION BECAUSE P.A. IS NOT REVEALED UNTIL THE END.

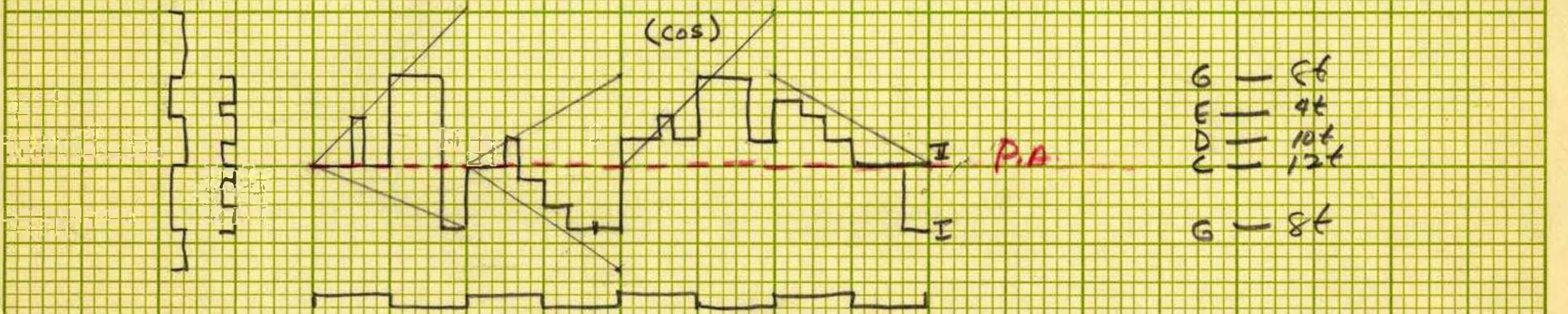


"c" 4T + "d" 4T + "c" 4T + "c" 4T
 42 + 92 + 52 + 12 (SUMMATION SERIES)

EASY TO LOVE 12/8



SONG FROM MOULIN ROUGE 3/4

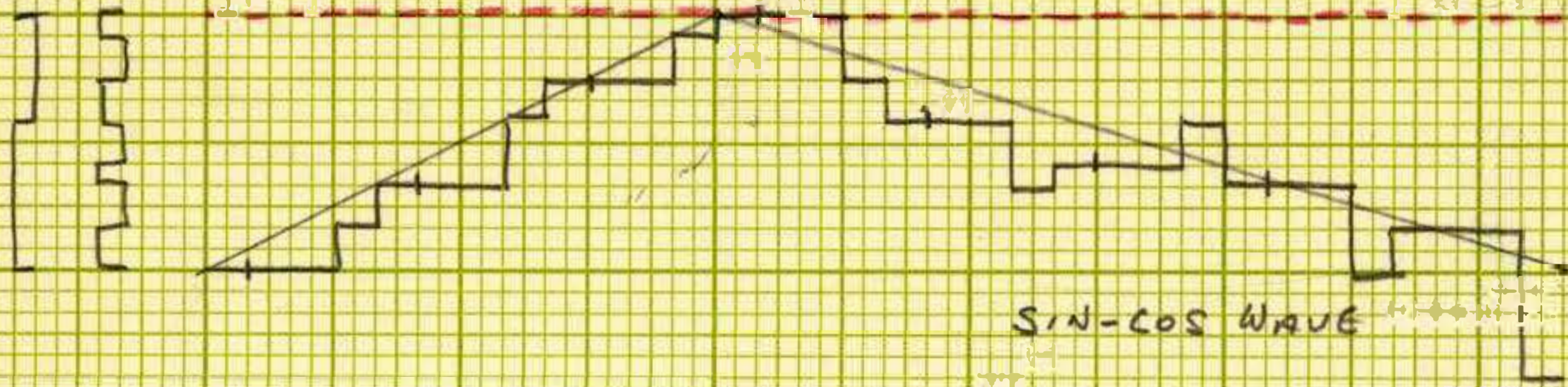


$$\frac{2}{4} 2T + \frac{2}{4} 2T + 2 2T + 6 2T$$

$$5a + 6a + 5a + 5a$$

BELLS OF SAINT MARY'S A+B

A-THEME



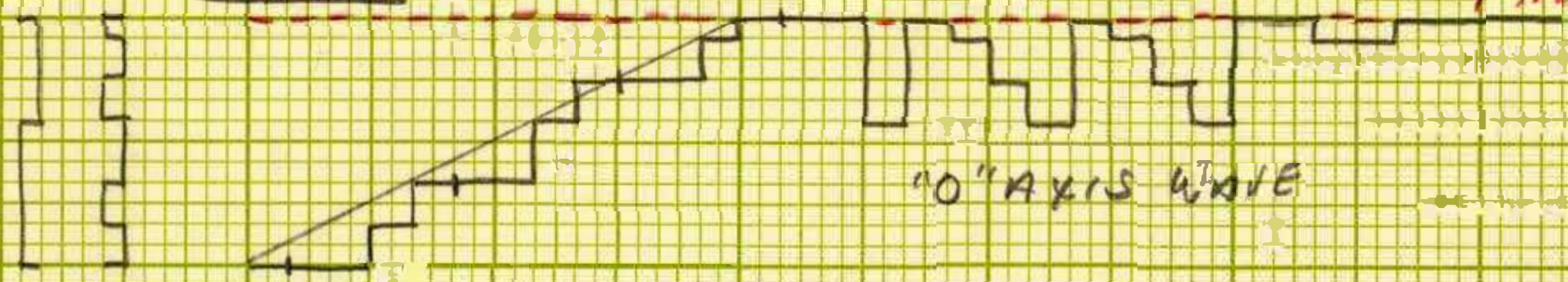
C	6t
A	8t
G	10t
E	14t 6t
D	8t
B	8t

SIN-COS WAVE

$$6T + 10T$$

$$92 + 142$$

B-THEME



B	22t
A	10t
B	10t
B	8t
E	6t

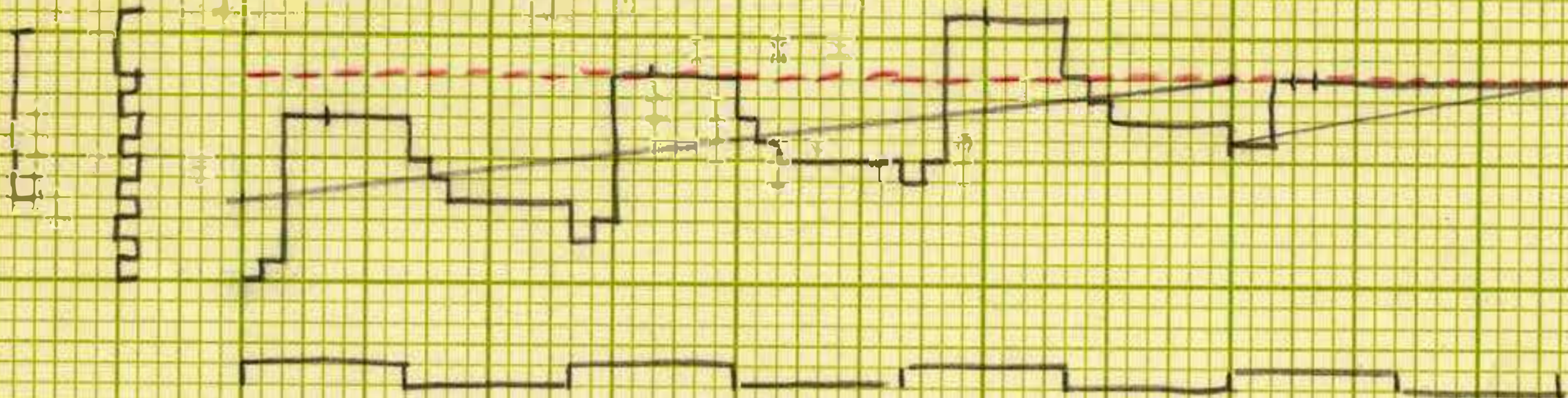
"0" AXIS WAVE

$$6T + 10T$$

$$92 + 142$$

BUT BEAUTIFUL

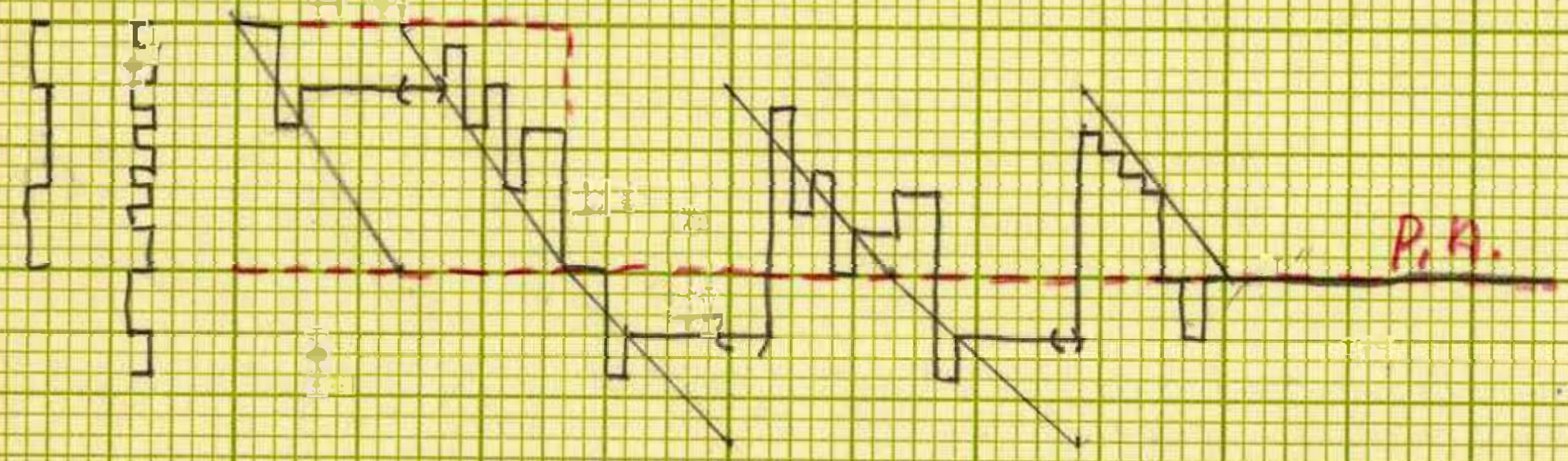
1ST ST



G	6t
F	23t
D	13t
C	8t
B	6t

6T + 2T
 212 + 40

GLUE CHAMPAGNE



D	8t
C	5t
B	2t
A	4t
G	2t
F	21t
E	14t

d 2T + d 2T + d 2T + b 2T + d 2T + d 6T
 3e + 5e + 3e + 5e + 3e + 7e

DEEP PURPLE A+B

1ST ST



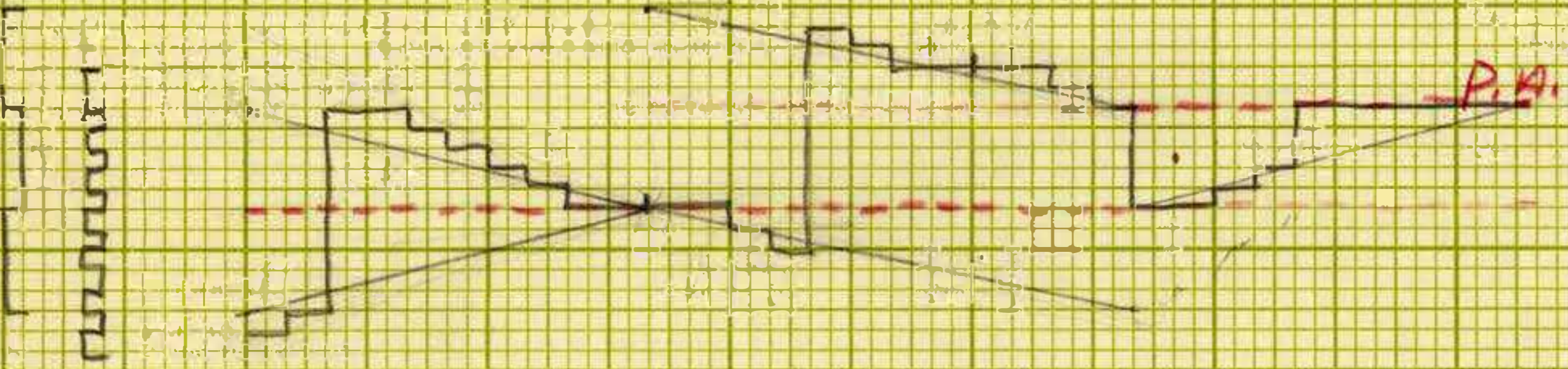
- D — 4t
- C — 10t
- A — 6t
- F — 0t (Key Axis)
- D — 18t
- C — 6t



$$\frac{b}{0} 4T + 25T + b7T$$

$$62 + 92 + 92$$

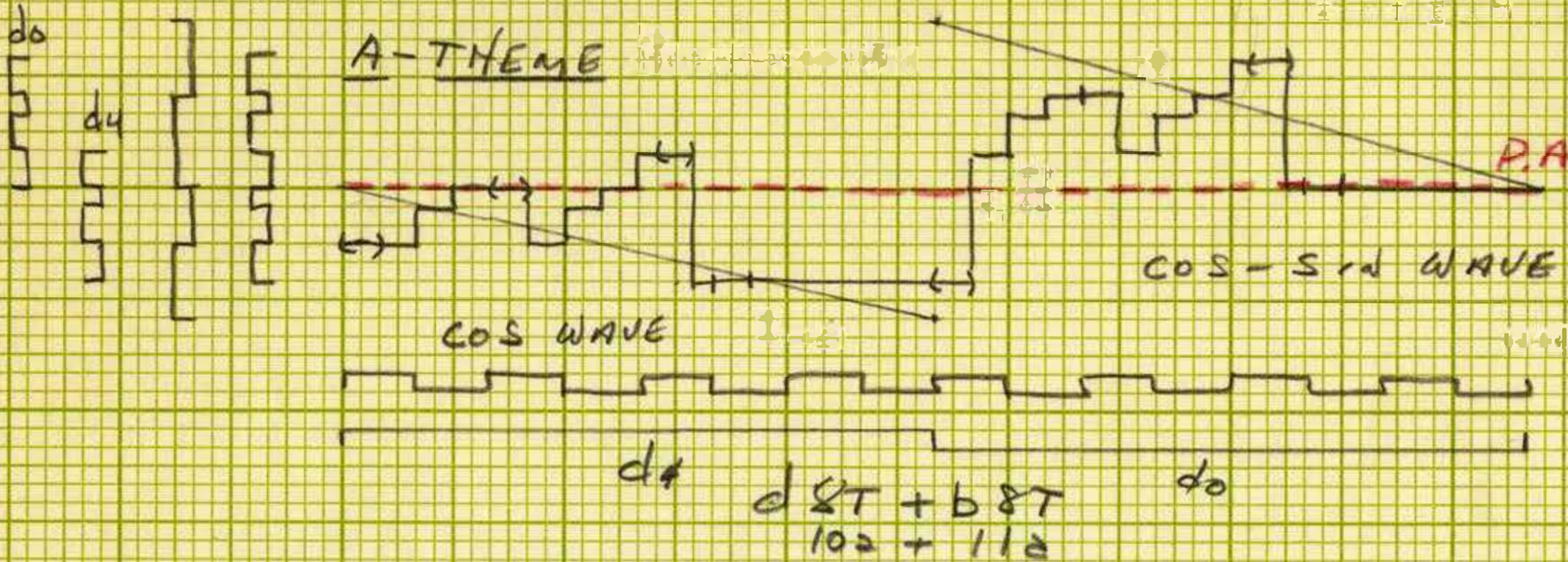
2ND ST



- G — 16t
- G — 12t
- F — 2t
- D — 10t

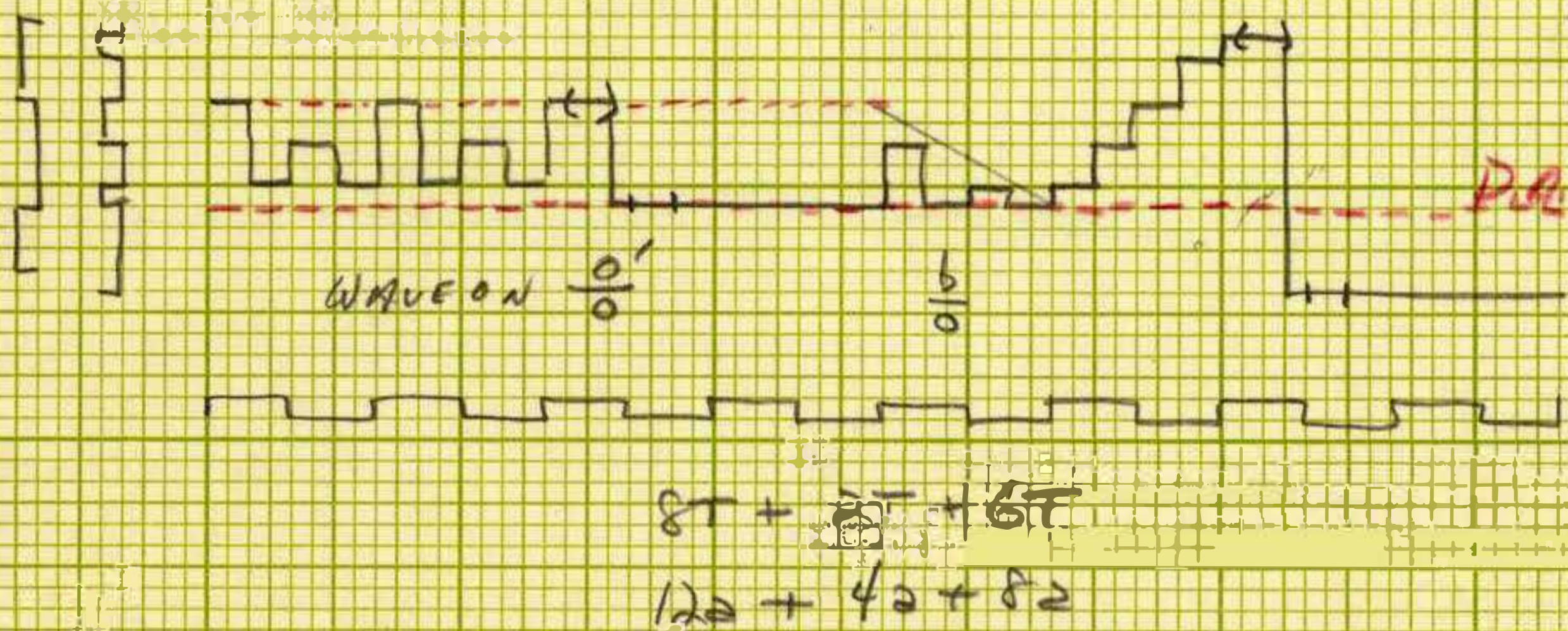


EMBRACABLE You A+B+A+C CONSTRUCTION



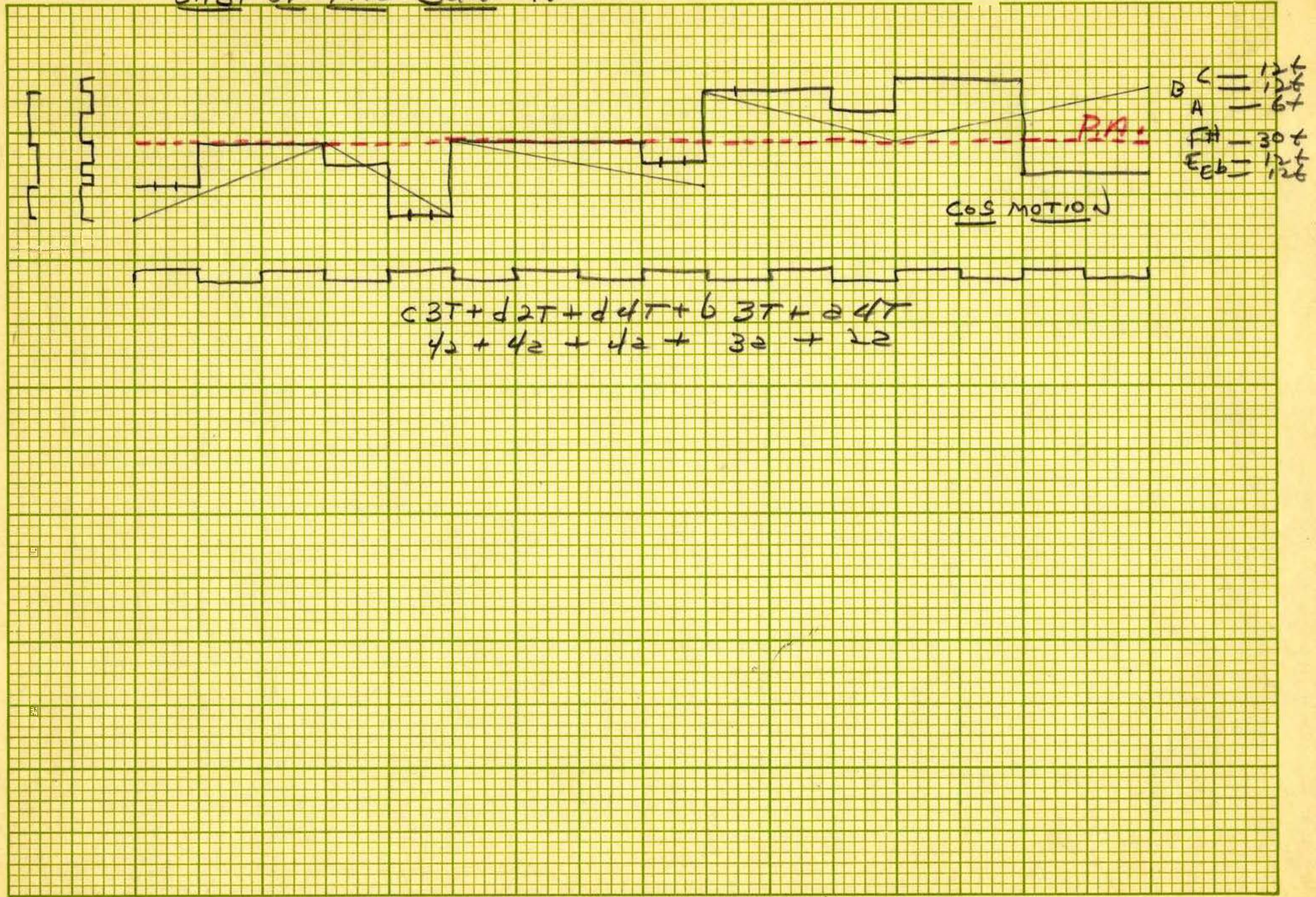
C	66
B	46
A	76
G	196
E	46
D	156

B-THEME



B	96
A	86
G	126, 176
D	136

EAST OF THE SUN 12/8

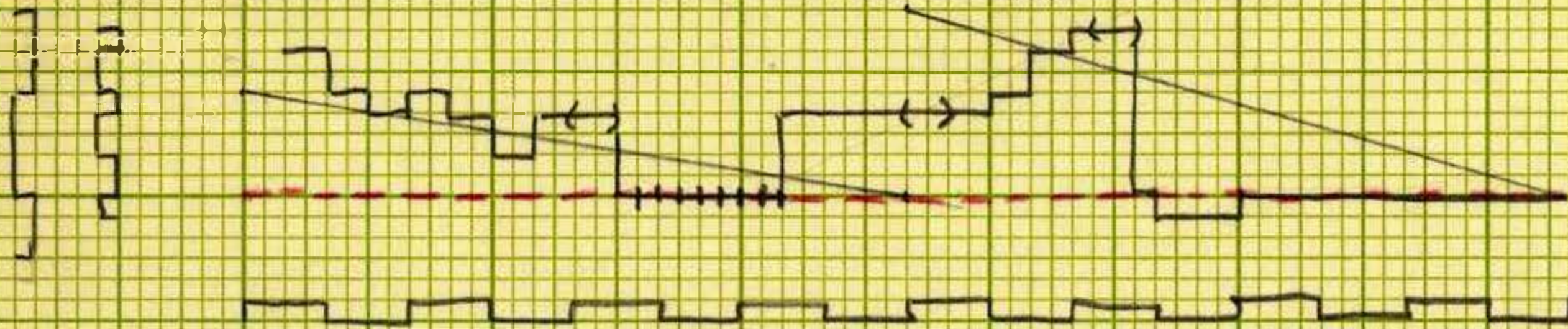


$$c 3T + d 2T + d 4T + b 3T + a 4T$$

$$42 + 42 + 42 + 32 + 22$$

EMBRACABLE YOU

C-THENE



D	—	6t
C	—	6t
D	—	18t
G	—	25t

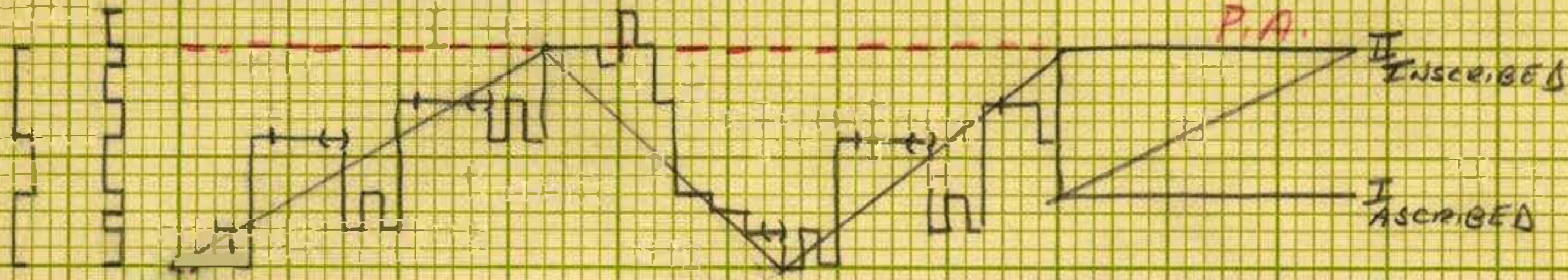
$$\begin{array}{l} b 8T + b 8T \\ 16a + 7a \end{array}$$

arsenic

— Get out of town



A UNIT MISBEHAVING



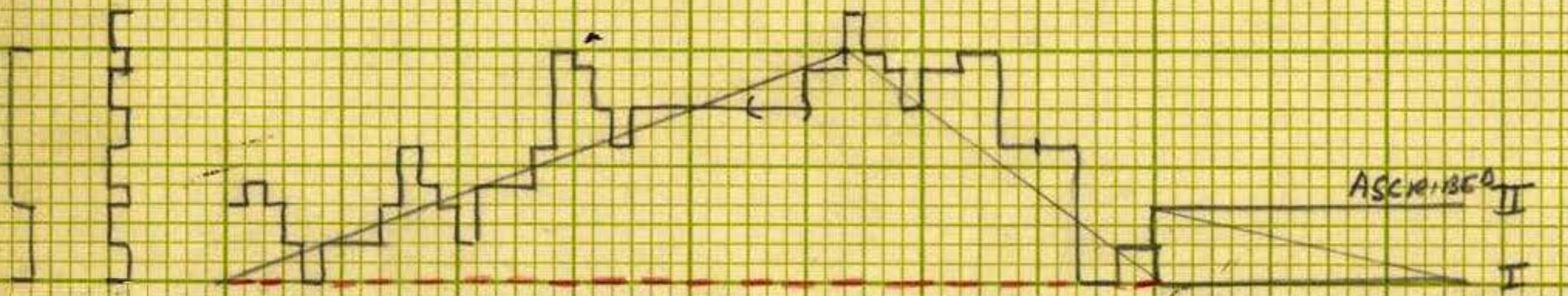
Eb	—	20¢
C	—	10¢
Bb	—	13¢
F	—	8¢
Eb	—	5¢



$$c5T + d3T + c4T + c4T$$

$$13¢ + 8¢ + 11¢ + 1¢$$

A TIME GOES BY



C	—	4¢
B	—	6¢
A	—	12¢
G	—	7¢
F	—	5¢
E	—	17¢
D	—	7¢
C	—	19¢

COS MOTION ("a" AXIS)



$$a8T + b4T + b4T$$

$$19¢ + 10¢ + 1¢ \text{ (ARITHMETICAL SERIES)}$$

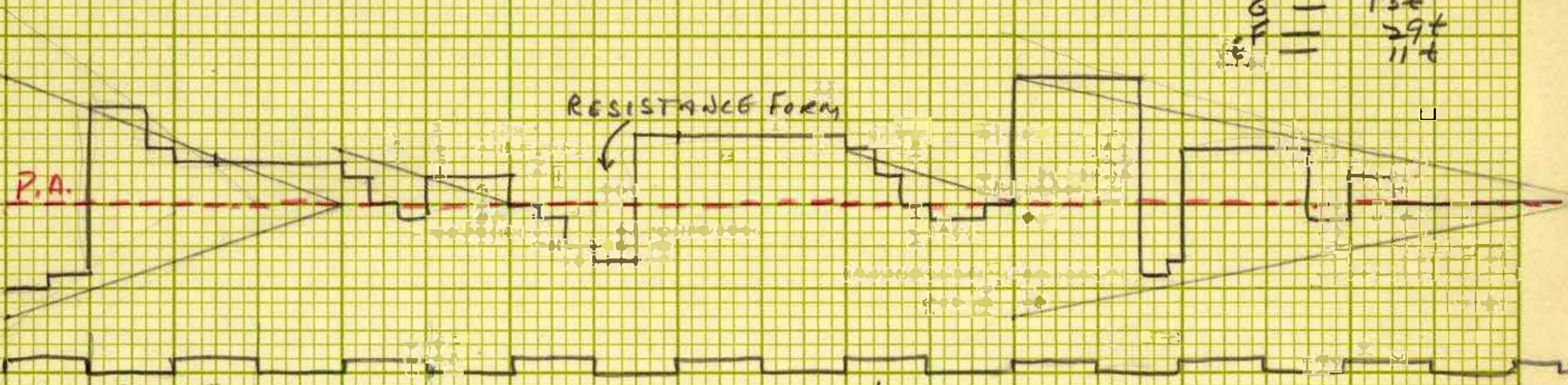
IN THE BLUE OF EVENING 12/8

1ST 10T

D
C
B
A
G
F
E

96
46
156
152
132
294
114

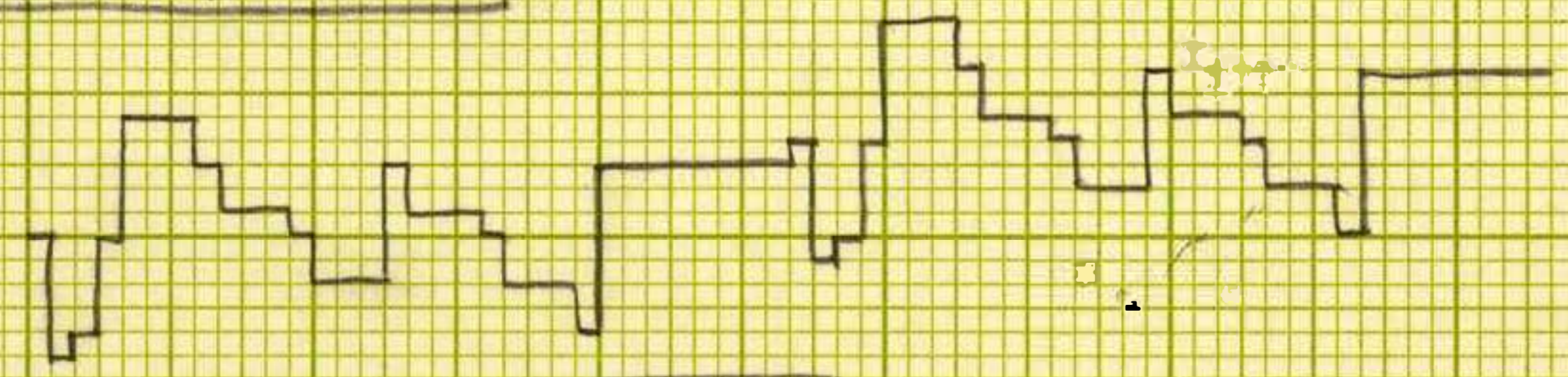
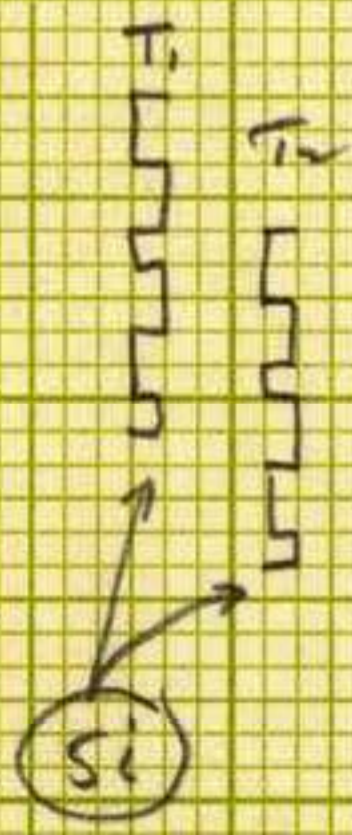
RESISTANCE FORM



$$\frac{b}{c} 4T + b 2T + 0 4T + b 2T + \frac{b}{c} 8T$$

$$62 + 42 + 62 + 52 + 172$$

8T OF RELEASE



CHROMATIC
ALT.
MODULATION.

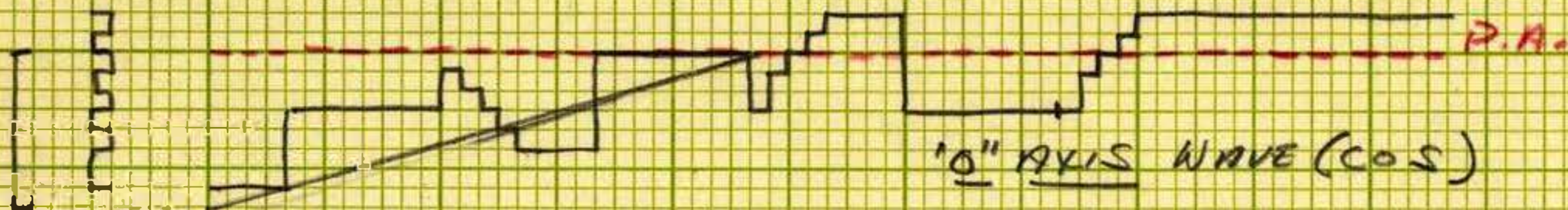


$$8T + 8T$$

$$152 + 152$$

HOLD ME

B-THEMB



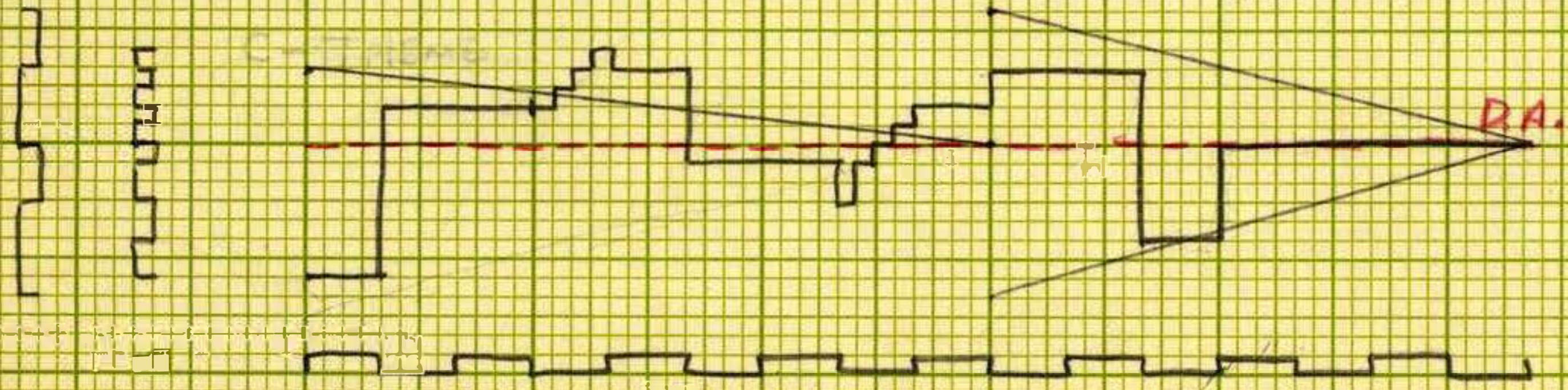
C — 20t
 12b — 10t
 G — 19t

10" AXIS WAVE (COS)

$$c 7T + \frac{c}{10} 9T$$

$$82 + 112$$

C-THEMB



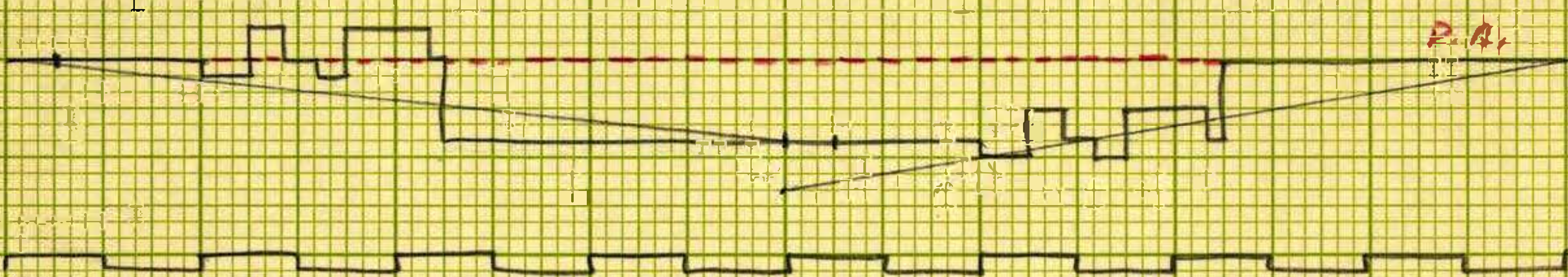
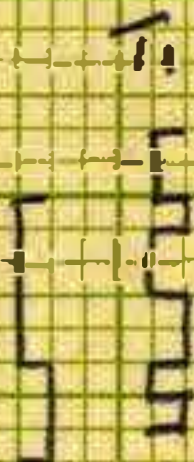
D — 13t
 C — 15t
 12b — 17t
 A — 9t

$$b 9T + \frac{b}{c} 7T$$

$$132 + 32$$

How SWEET You ARE

C-THEME

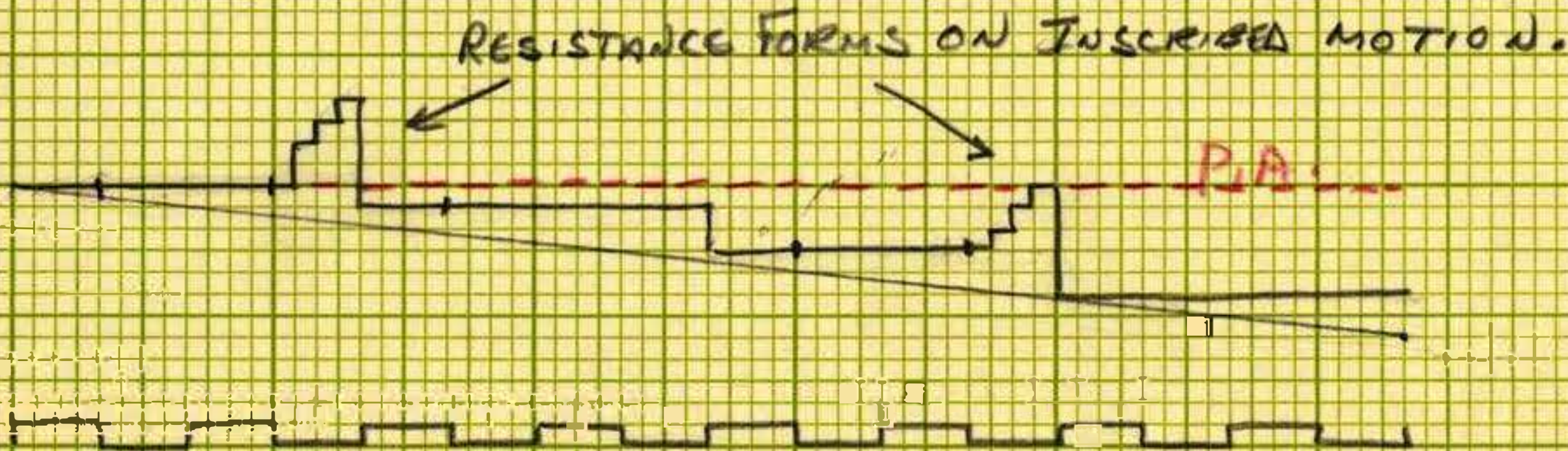
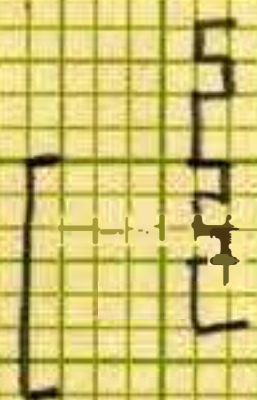


D - 76
 C - 366
 A - 76
 G - 366

d 8T + c 8T
 92 + 92

HOLD ME A + B + A + C

A-THEME



RESISTANCE FORMS ON INSCRIBED MOTION.

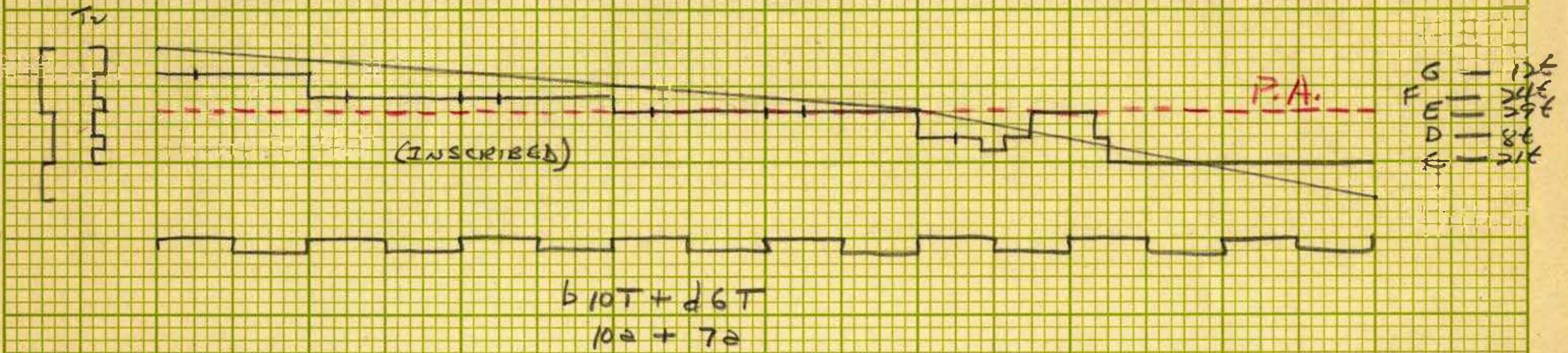
A Bb = 146 (414)
 G = 177
 F = 126
 F = 166

ENTIRE MELODY
 TAKEN INTO
 CONSIDERATION.

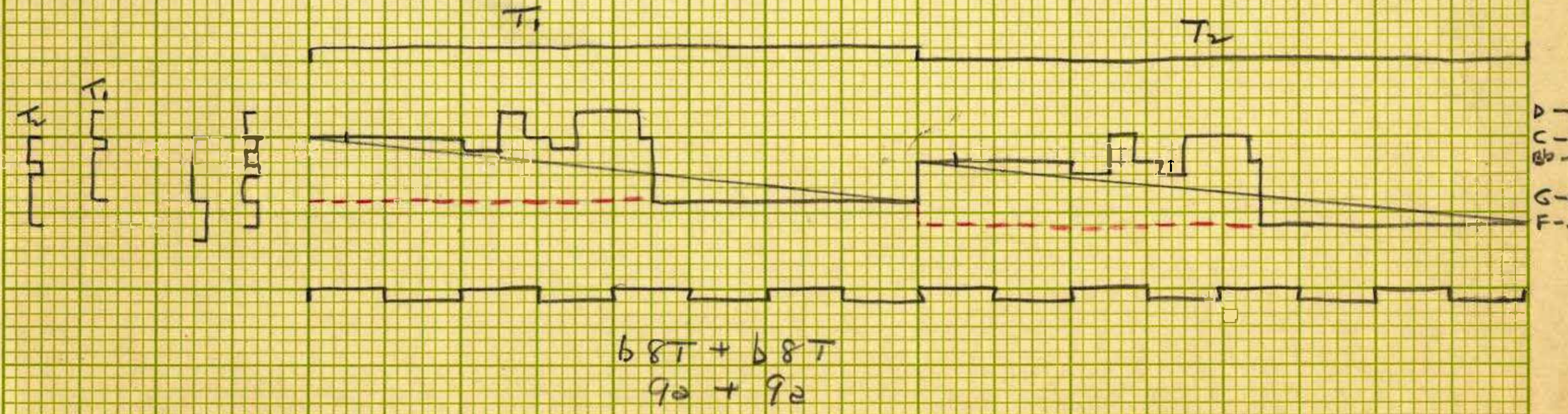
d 16T
 152

How SWEET You ARE $\frac{1}{8}$ A+B+A+C

A-THEME



B-THEME



SECTIONAL SCALE = 1+2+1+2+2+1



358-14

GRAPH SHEETS
DRAWING PAPER

100
SHEETS

8 1/2 X 11
IN.

MADE IN U.S.A.

TM. REG. U.S. PAT. OFF.



Theory of Archimedes

P

Theory of Orchestration